



## **FY 2012-2013 Annual Report**

### **Message from the Board President**



Another year has come and gone for Community Link and my service as Board President and I'm pleased to be able to serve the organization for one more term. It's a pleasure to work with committed board members and staff to achieve our mission each and every day.

I'd like to welcome our two newest board members Debra Baldwin and Joseph Heimann. Ms. Baldwin's son is a client at the Metro location and she brings a very enthusiastic approach to her position. She also has been extremely helpful in gaining more public awareness for Community Link in the Metro area. Mr. Heimann is an administrative law judge and has a sister who is a client at Community Link. Joe brings a very thoughtful approach to our discussions at the board level.

The board along with the staff is currently working to complete a new strategic plan for the organization. I appreciate the work of Vertical Performance and our facilitator Lyndon Joost

during this process. Our hope is to have board adoption of the plan in September and get started on the implementation of its many phases and aspects immediately thereafter.

Community Link is very well positioned to face the challenges that lay ahead. As Executive Director John Huelskamp refers to in his article, we are an organization that has always performed in a positive way to achieve what we set out to do. I agree with John's perspective that Community Link is ready for the future, whatever it brings, to serve our clients and their families.

My sincere thanks to all of our families for their support of our organization, without your belief in our mission we cannot accomplish what we set out to do.

The staff at Community Link is to be commended for their day to day contributions to better the lives of the clients they serve. It is a total team effort and your hard work does not go unnoticed by your board. ❖

### **Welcome New Board Members**



Community Link welcomed two new members to their Board of Directors in March 2013.

Judge Joseph Heimann of Highland comes to Community Link with over 30 years of federal service. Judge Heimann, Colonel, USAF retired, currently serves as an Administrative Law Judge with the Social Security Administration, after 27 years of active duty as a Judge Advocate in which he served commanders at every level, to include the Chairman of the Joint Chiefs. Joe welcomed the opportunity to work with Community Link in the hopes of serving his sister, Peggy, and others with developmental disabilities and other difficulties. Joe and his wife, Nancy, both originally from Clinton County, are the proud parents of a son, a daughter, and four grandkids.

Deb Baldwin of Fairview Heights has been retired since 2009

and brings with her experience in the fields of advertising and computer technology.

Deb has been actively supportive of both the Fairview Heights Police Department and Fairview Fire Department since 1996, publishing a newsletter with crime and safety tips that is mailed out bi-annually to the residents of Fairview Heights. Deb is co-founder of the organization CUFF (Citizens United For Fairview), which also hosts an annual recognition night for local law enforcement and firefighters.

Deb's youngest son is a participant in the day program at the Community Link Metro (Fairview Heights) location. Deb enjoys spending time with her family, especially her grandchildren. As a strong parent advocate, Baldwin looks forward to contributing her experience and dedication to Community Link. ❖



## BOARD OF DIRECTORS FY 2013

### OFFICERS

**President John Lengerman**

Executive Director, Greater Belleville  
Chamber of Commerce

**Vice President Brad Beck**

Associate Executive Director, Christian Social  
Services of Illinois

**Treasurer Mike Nettemeier**

CFO (retired) Scott Air Force Base

**Secretary Jerry Albers**

Maintenance Department, St. Joseph Hospital  
Breese

### DIRECTORS

**Deb Baldwin**

Co-Founder, Citizens United for Fairview (CUFF)

**Wesley A. Gozia**

Attorney/Owner, Gozia Law Firm LLC

**Judge Joseph Heimann**

Colonel, USAF Retired  
Administrative Law Judge, Social Security  
Administration

**Steven R. Huelsmann**

Service Recipient Representative

**Jim Kreke**

Vice-President, First County Bank

**Leslie A. Pedtke**

Administrator, Aviston Countryside Manor

**Charles V. Poettker**

President, Poettker Construction

**Jan Wilburn**

Owner & CEO, Kohnen Concrete Products

### KEY STAFF FY 2013

**John Huelskamp**

Executive Director

**Fran Taylor**

Director of Finance and Administration

**Barb Nelson**

Director of Adult Programs

**Janice McElroy**

Director of Children's Programs

**Jamie Fields**

Director of Development

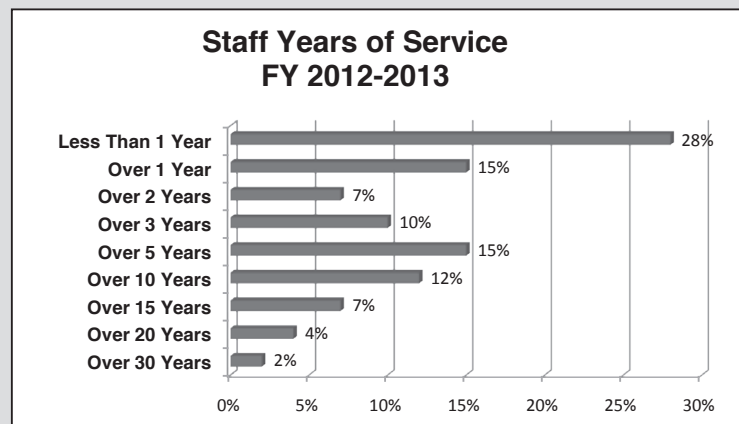
## Adult Day Programs Consumer Advisory Council

The Consumer Advisory Council (CAC) acts as advocates for all consumers. The CAC is made up of five consumers elected from a consumer voting process. The CAC makes recommendations, voices their concerns, and discusses issues with representatives of the agency. These issues are incorporated into the program evaluation process and used in Strategic Planning. The CAC meets quarterly, followed by an all-consumer meeting discussing the content of that meeting and any other concerns, comments, or suggestions. ❖



Members from Adult Day Training Breese site l to r: (front row) Chris Gebke (Associate Director of Adult Day Programs and Council Chairperson), Kathy Wempe (front), Mallory Wessling, Heather Holthaus, Katie Bunt, Samantha Haar (front), Jan Wilburn, CL Board of Directors Representative, and not pictured alternate Jason Seidel.

Members from Adult Day Training Fairview Heights Metro site include: Sarah Harr, Daniel Hardin and Flo Thompson.



**Total number of employees at end of fiscal year: 165**

**Total turnover rate for fiscal year: 28%**

**Number of employees who ended employment: 47**

## FINANCIAL REPORT

Community Link is pleased to present the following audited summary of revenues, expenses, and changes in net assets for the Agency's Fiscal Year 2012-2013, ending this past June 30. For a copy of the completed audit, please e-mail [info@commmlink.org](mailto:info@commmlink.org) or call (618) 526-8800.

### Revenue

Contributions/Fundraisers	\$452,440	6%
Government Funding	\$6,147,711	82%
Client/Family/Third Party Fees	\$478,358	6%
Sales from Worksites	\$337,053	4%
Investment and Other Income	\$88,965	2%
<b>Total Operating Revenue</b>	<b>\$7,504,527</b>	<b>100%</b>

### Operating Expenses

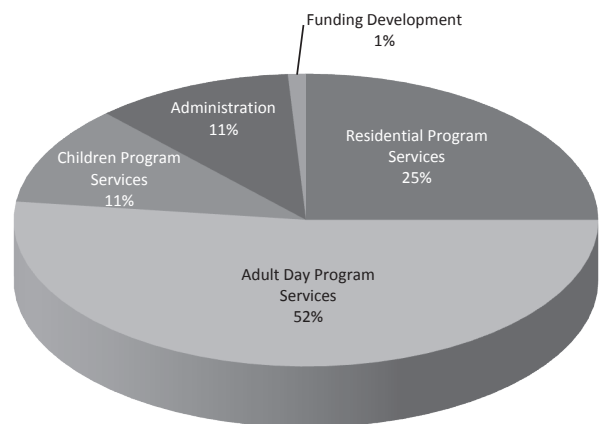
Salaries & Benefits	\$5,174,058
Other Operating Expenses	\$1,965,968
<b>Total Operating Expenses</b>	<b>\$7,140,026</b>

**Net Operating Gain** \$364,501

Depreciation Expense \$148,248

**Net Gain after Depreciation Expense** \$216,253

### Functional Expenses FY 2012-2013



**Community Link's \$7 million budget flows back into the surrounding communities, through salaries paid to employees and the purchases from local vendors.**

## First Step strives to meet the needs of children and families...



*The Early Intervention Program of First Step specializes in pediatric therapies for children ages birth to three. Children that have difficulties or disabilities in speech, language, cognition, self-help skills, socialization, behavior, or motor skills may benefit from these services. Kim Lohman, Disabilities Service Coordinator, is helping Jayce increase his vocabulary through the parachute game and "popping popcorn".*



*As part of the Early Head Start Program of First Step Early Learning & Family Support (a division of Community Link), Chrissy Brown, Home Visitor, demonstrates building with homemade blocks in a Parent as Teachers activity.*

First Step Early Learning & Family Support Programs provide a diverse set of services for children and families: Early Intervention therapy services, for children with special needs 0-3; Children's Waiver case coordination, for children 3-21; Prevention Services, for children 2-4; developmental screenings; and Early Head Start, for children 0-3 and pregnant mothers. Prenatal and parent support and education are offered through classes at St. Joseph's Hospital, which is funded through United Way of Greater St. Louis. ❖

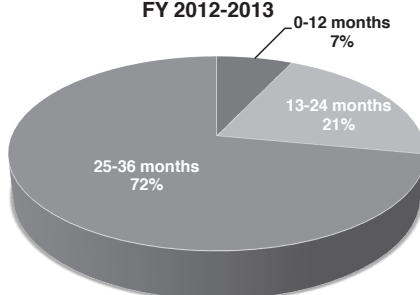
## The need for EI and EHS services grows...

The number of children receiving First Step Early Intervention therapy services continues to increase, growing from 204 children served during FY 2012 to 258 in FY 2013. The program also grew from having seven skilled contractual therapists to nine. During this past year, a total of 4,944 direct service hours have been provided to children and families with special needs. This is an increase of 1,837 hours from the previous year. First Step is working to increase case coordination services to provide parent advocacy, trainings, support and resources for parents with children of special needs, with a focus on supporting parents with the IEP and IFSP process. A goal of EI is for families to learn how to more effectively meet the needs of their children and enhance growth and development while providing in-home therapy services in the child's natural environment, using resources from the child's home. Early Head Start Parent Educators served a total of 82 children and 9 pregnant women in FY 2013 by providing home based services to low income and other at risk families. Empowering parents to take the role as their child's primary teacher, preparing them for school readiness, and ensuring the children's preventive and primary health care needs are being met are priorities of this program. ❖

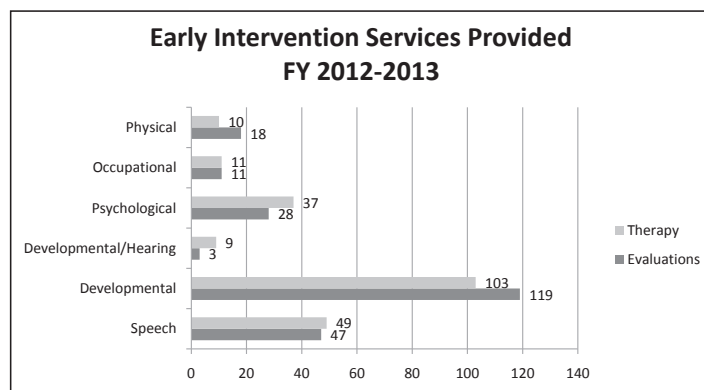
## Prevention to expand to provide services all year round...

The First Step Prevention program is expanding to provide prevention services year round to children with special needs that would not otherwise be eligible for Early Intervention or Early Head Start. Prevention fills the gap by providing in-home, comprehensive services for children who fall in the gap of being too old for Early Head Start services and are waiting to be accepted into a formalized setting (Head Start and/or Early Childhood program). Services are provided to prevent regression of progress made from discontinued therapy services. Our Prevention Specialist is certified and trained to use the Parents as Teachers curriculum and is able to utilize Creative Curriculum Activities. Any untreated delay or environmental stressors can cause a child to experience setbacks upon entering school. ❖

### Early Intervention & Prevention Ages of Children Served FY 2012-2013



Families Receiving EI Service by County FY 2012-2013	%
Clinton	32
St. Clair	19
Madison	11
Marion	8
Washington	6
Montgomery	6
Bond	5
Calhoun	3
Macoupin	2
Christian	2
Greene	1
Jersey	1
Monroe	1
Perry	1
Randolph	1
Sangamon	1



# Community Living Programs witness the power of community involvement...

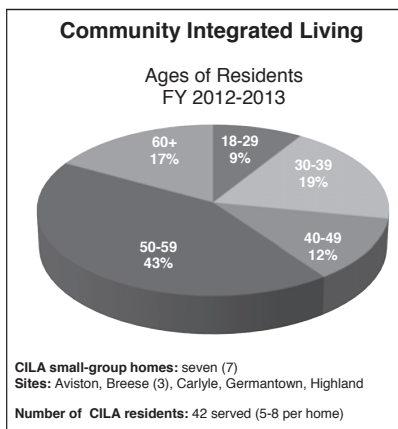
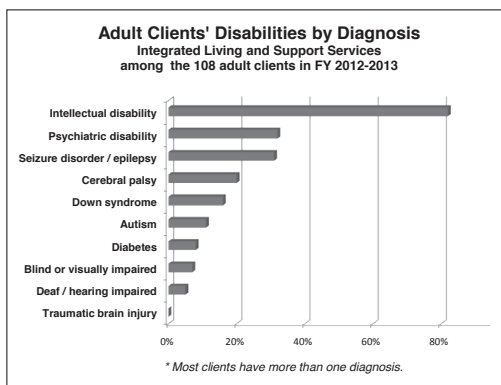


From l to r: residents, Alvin Hacker, David Dalhaus, Brandy Gallagher; volunteers, Rich & Marcie Hacker; residents, Deb Delano; Team Leader, John Lampen; resident, Tina Holtmann, and Community Integrated Living Specialist, Dylan Ritter. Seated on bench: residents, Marilyn Toennies and Deanna Nordike.

The power of community is witnessed in the transformation of one of Community Link's Community Integrated Living Arrangements (CILAs) in Germantown. This residence is home to seven individuals with developmental disabilities. The home's shrubs were very overgrown, hiding the windows and entryway of the home. The need for the upgraded landscape was recognized by Rodney Friederich of All Green Lawn and Kurt Ripperda of Jerry's Landscape Nursery. Rodney pulled all of the shrubs in the spring of 2012...then came the heat wave! The ground remained untouched.

This spring, Rich and Marcie Hacker called to express their interest in giving their time and talents to complete the project. A generous donation from the Catholic Holy Family Society's Hearts and Hands Program got them started, and soon other interested people and businesses offered contributions to this project. Jerry's Landscape Nursery, August Wildhaber Sales & Services, Tonnies Hardware & Rental, and Gerry Kohnen all contributed to this project. Rich and Marcie Hacker edged

the landscape area with bricks, cleaned up other shrubs and trees throughout the yard, added a brick seating area with a bench, and planted all new plants. The result is a beautiful new addition which complements the house and gives the residents a nice place to relax and enjoy a bit of nature in their yard. The residents of this home are very grateful for the kindness and support of these individuals, and are very happy with how their home looks. ♦



## Enriching Opportunities...

### FUSION Participants viable in the community

The purpose of the Finding Unique Services by Individualizing Opportunities and Needs (FUSION) Program is to enhance and encourage community involvement thus allowing individuals to become more active members of their communities through social and skill development and support. The program is designed to take a unique look at ways each individual can utilize community resources based upon their own personal interests. This past year, host organizations included the following:

- American Cancer Society, Highland
- Breese Junior Women's Club
- Chakota Therapeutic Horse Ranch
- Clinton County Humane Society
- Knights of Columbus, Carlyle Council #1382
- Retirement, Nursing Rehabilitation Centers:
  - Aviston Countryside Nursing Home
  - Hitz Memorial, Alhambra
- U.S. Army Corps of Engineers

## Developmental Training participants engage in lifelong learning...

Every afternoon at the Breese Day Training West site, clients participate in breakout classes where they can learn specific skills. One of the breakout classes offered is Sign Language. This class is taught by Dianna Kanthack and Jamie Duncan and has been running since August 2012. In this class, clients learn signs that help them communicate their wants and needs in their everyday lives. Bobbie can now sign “yes” and “no”. Tony can sign “restroom”. Hanna Laminack has learned at least sixty signs. Some of her favorites include “mother”, “father”, “food”, “drink”, and “house”. ❖



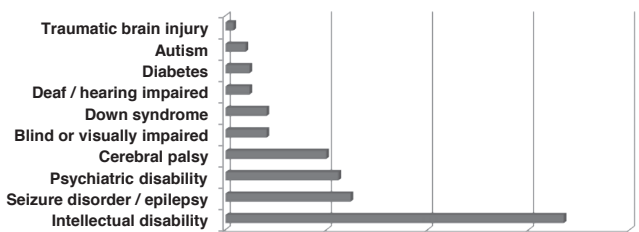
*Pictured l to r: Dianna Kanthack, Habilitation Specialist, Jamie Duncan, Habilitation Assistant, and Hanna Laminack, Program Participant, signing “I love you.”*

Breese Day Training West Classroom 1 learned about fruit and the health benefits of fruit. The class made 3D fruit mobiles to hang from the ceiling, discussed what fruits were in season, what each participant’s favorite fruits were to eat, and how eating healthy is good for the body. The class made a list of their favorite fruits, and Brittany Weathers, Habilitation Specialist, took a few participants to the grocery store to purchase the fruits. Everyone in the class enjoyed a fruit salad with their favorites! ❖



*Beverly Brandkamp enjoying her fruit mix after learning about the health benefits.*

**Adult clients' disabilities by condition  
among the 345 adult clients in FY 2012-2013**



\* Most clients have more than one diagnosis.

**Adults Receiving Services  
by County  
FY 2012-2013**

Clinton County	56%
St. Clair County	36%
Madison County	7%
Washington County	0.5%
Bond County	0.5%

**Total Adult Day participants, past year: 345**

**Total days of service provided, past year: 242**

**Total hours of day services provided, past year: 362,395**

## Participants enhance the community through employment and recycling growth...



*Mallory attends work every day assembling parts for one of our employers.*

Mallory Wessling works in the Work Training program. She and her co-workers learn work related skills and work behaviors such as being punctual to their work station, following supervisor directions, and completing an assigned task in a timely manner.

In addition to Work Training, other programs include Supported Employment, Job Readiness Training, and Job Placement. ❖

## Recycling Business Grows

In FY 2012-2013, CL increased recycling by 26 tons. We encourage households and businesses to “go green” through our curbside and business pickup services in Clinton County, along with drop off locations in Beckemeyer, Damiansville and Germantown. This past fiscal year we processed over 615 ton of material. ❖



*Chris Toennies (l) provides a tour of the recycling program to pre-school students from the Child Development Center at Scott Air Force Base.*

### The recycling program provided the following:

- 550 households with curbside services
- 41 businesses for pickup
- 8 part-time employment opportunities for individuals with development disabilities
- 4 part-time drivers

### In appreciation for our current employers



Arrow Group Industries, Inc.  
Breese



Basler Electric  
Highland



Eaton's Cooper B-Line  
Highland & Troy



Highland Recycling & Shredding  
Highland



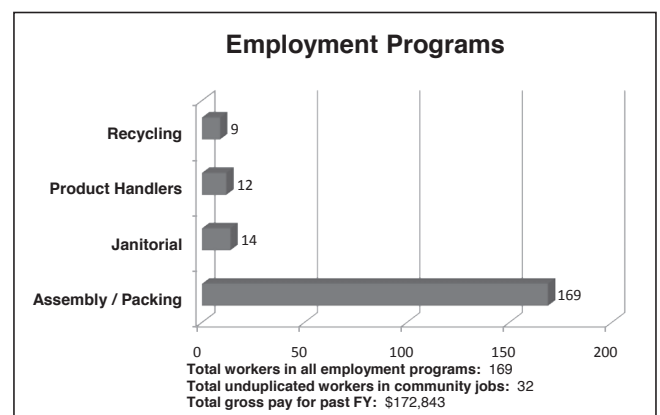
Jim's Formal Wear  
Trenton

### With gratitude to our supported employment sponsors

CC Food Marts, Breese  
Casey's General Stores, Breese  
Hansen Foods, Inc., dba Hardee's, Breese

### We're pleased to provide janitorial services for

Community Link, East Building, West Building & First Step  
Germantown Public Library  
Clinton "Marc" Smith, D.C., Breese  
Special Olympics Illinois, Highland  
Schuette SuperValu Markets, Breese & Carlyle





# FY 2012-2013 Donor Roll

## With Gratitude

This Donor Roll honors the funders, businesses, organizations, and individuals who have made it possible for the Agency to serve nearly 550 individuals and their families on an ongoing basis (and hundreds more with occasional services) during the 12 months ended June 30, 2013. In an era of diminished government funding, our not-for-profit charitable organization increasingly relies on community support. To each of you, we are grateful for your gener-

ous support. To those who have asked to be listed as anonymous, please know that your giving is much appreciated. To those we may have inadvertently omitted, we offer our sincerest apologies, ask your understanding, and invite you to let us know about the omission, so we may adjust our records and recognize your contribution. Thank you again for transforming disabilities into possibilities!

### IN APPRECIATION OF OUR DONORS July 1, 2012 through June 30, 2013

#### FEDERAL/STATE GRANTS

Early Head Start Continuation Grant  
Illinois Department of Commerce and Economic Opportunity  
(recycling grant for new loading dock)  
Title XX Early Intervention / Regular Work  
Health Matters CAP IL Community Associate Grant

#### CONSOLIDATED CAMPAIGN FUNDING

Combined Federal Campaign (CFC)  
United Way of Greater St. Louis (allocation)  
United Way of Greater St. Louis (one time basic needs grant)

#### FOUNDATION GRANTS

Employees Community Fund of Boeing St. Louis  
(bathroom fixtures for Metro location)  
Carlyle Healthcare Foundation (dental work for CILA resident)  
Clean Energy Foundation (lighting at all facilities)  
Ameren Non-Residential Hardship Grant (energy cost savings)  
Payless Gives (shoes for children)

#### LOCAL GOVERNMENT GRANTS

St. Clair County 708 Mental Health Board  
(art therapy program)  
Clinton County 708 Mental Health Board

*Please share the information below  
with family and friends ...*

**FEDERAL EMPLOYEES AND RETIREES**  
may designate a payroll-deduct or 1-time gift to



by using

**Code #83161** on the  
Combined Federal Campaign Pledge Card



**STATE OF ILLINOIS**  
**EMPLOYEES AND RETIREES**  
may designate a payroll-deduct or 1-time gift to



by using

**Code #195-035**  
on their State and University  
Employees Combined Appeal Card.



## GALA SPONSORS

Bob Brandkamp  
The Family of Sean Herzing  
First Bank  
Gozia Law Firm, LLC  
Highland Recycling & Shredding  
Jansen Chevrolet  
Jim's Formal Wear  
K & J Chevrolet, Inc.  
Koetting Insurance  
Kohnen Concrete Products, Inc.  
Mutual of America  
Poettker Construction Co.  
Southern OB/GYN Associates  
Timmermann Milk Service, Inc.

## BUDDY WALK SPONSORS

First County Bank  
Foppe Insurance Agency  
Henken Storage  
Rooters Asphalt

## OTHER BUSINESS DONATIONS

*(excluding Golf Scramble Sponsors, recognized in ad on the right)*

Aviston Lumber Co.  
Beckmann Distribution Service, Inc.  
Benhoff Insurance Agency  
Beyond the Garden Gate  
Boulder Yacht Club  
Breese Motor Sales, Inc.  
Carl's 4WD & Performance Center  
CC Food Marts  
Clinton Seamless Guttering  
Dairy King  
DCA Construction  
Donnewald Distributing Employees  
ExecuTech Strategic Consulting  
Farmers State Bank – Hoffman, IL  
First Bank – Breese  
First County Bank  
First National Bank in Carlyle & Aviston  
Foppe Insurance Agency  
Gateway FS

Gil Klein's Brand Source TV & Appliances  
H & R Block  
Imming Insurance Agency  
Jim's Formal Wear  
K & J Chevrolet, Inc.  
KJ Appliance Repair  
Knotty Pine Inn & Motel  
Koetting Insurance  
Krehbiel & Associates, LLC  
Meyer Catering  
Meyer's Greenhouse & Nursery  
Mid-County Auto Supply  
Mideastern Plumbing, Heating & AC  
Larry Deiters - NACO Printing  
Rivera Medical, LLC  
Sandy's Hair Design  
Schuette's Markets  
Snick's Tavern, Inc.  
Southern OB/GYN Associates  
The Design Studio

## EMPLOYERS MATCHING GIFTS

Covidien  
Macy's  
Shell Oil Co. Foundation  
TIAA-CREF Employee Giving Campaign

## THIRD-PARTY FUNDRAISERS

Clinton County Licensed Beverage Association  
Team B.E.S.T.  
Fastlane for Hannah – Mike & Debra Berndsen  
Kathy Holthaus

## ORGANIZATIONAL GIFTS

Breese Junior Women's Club  
Catholic Holy Family Society  
• Council #28  
• Council #82  
Catholic Urban Program  
Healthcare Foundation  
Junior Service Club of St. Clair County  
Knights of Columbus  
• Albers Council #9768  
• Aviston Council #11110



**Thanks to the sponsors of our 17th Annual Golf Scramble  
Saturday, June 22, 2013**

### PRESENTING SPONSORS



### GOLD SPONSOR



### SILVER SPONSORS



### CLIENT TEAM SPONSOR

First National Bank - Carlyle

### BRONZE SPONSORS

Albers Knights of Columbus Council #9768  
Aviston Knights of Columbus Council #11110  
Beckmann Construction Company  
Bestway Equipment, Inc.  
Breese Knights of Columbus Council #2869  
Dairy King Breese & Trenton  
Diekemper Excavating, LLC  
First Bank - Breese  
Germantown Kernel Nut Club  
Gerstner Plumbing, Inc.  
Hempfen Funeral Home - Carson Hempfen  
HMG Engineers, Inc.  
K & J Chevrolet, Inc.  
KJ Appliance Repair  
Krehbiel & Associates, LLC  
Luebbers Welding & Mfg., Inc.  
M & E Auto Body, Inc.  
Moss Funeral Home  
Nine Seventy Furniture & Flooring  
Pat & Esther Norrenberns  
Schuette Super Valu Markets  
Smith Chiropractic Clinic  
Southern OB/GYN Associates  
Timmermann Milk Service, Inc.  
Troennies Service Co.  
Wade Sales & Services, Inc.

**Gifts In Kind & Other Donors:** Ahner Florists & Greenhouses, Aviston Lumber Co., Barb & Rick Gerstner, Benhoff Insurance Agency, Bent Oak Golf Course, Breese Journal & Publishing, Clinton County Farm Bureau, Carlyle Pizza Hut, Dairy King, Dave Klumke, Edward Jones-Jim Kueper, Excel Bottling, First County Bank, Foppe Ace Hardware, Germantown Trust & Savings Bank, Gerstner Plumbing, Inc., Good Ole Plant Land, Gozia Law Firm, Haag Food Service, Inc., Harry & Darleen Nelson, Hidden Lake Winery, Janice Aarns, Jerry's Landscape Nursery, Kim Karbach, Knotty Pine Inn & Motel, Mioux Florist & Greenhouse, Nine Seventy Furniture & Flooring, Nu Image Salon Spa & Tanning/Posh Boutique, Pauline Glenn, Marshal D. Holzhauer, Attorney-at-Law, Mid-County Auto Supply, Pizza Market - Breese & Trenton, Poettker Construction Co., Royal Office Products, Schuette Super Valu Markets, Schwarz Hardware Stores, Inc., Southern Bus & Mobility, St. Joseph Hospital Healthplex, Strano & Associates Real Estate, Taylor Made Signs, Wal-Mart - Carlyle, Watts Copy Systems, Inc.

*Thanks to all the golfers and team sponsors!*

Community Link is a proud member of  
United Way of Greater St. Louis





*First Step Early Intervention program facilitates playgroups for families and their children. These playgroups support the parent-child relationship and recognize that the parent is the first and most important teacher for their child.*



*Community Link program participants help several times throughout the year with mailings. The biggest being Possibilities, and getting over 3,800 pieces ready to send.*



*Margie Abert, Personal Development Specialist at Community Link, hosted a Halloween Party for participants in the Family Support Unit and Intermittent CILA programs.*

- Breese Council #2869
- Carlyle Council #1382
- Highland Council #1580
- New Baden Council #10311
- Lions Club – Breese
- Lions Club – Carlyle
- St. Felicitas Church Altar Sodality
- St. Monica's CCW – St. Augustine Church-Breese
- VFW Auxiliary Carlyle Post #3523

## IN MEMORY OF...

**Cheryl Albers** from Donald & Claudia Albers

**Karen Budde** from Anonymous  
Dennis & Sandy Albers  
Anthony & Donna Budde  
Shirley Budde  
Stanley Budde  
CC Food Marts  
Elaine Fehrmann & Dennis Winkeler  
Nathan & Amanda Freund & the Boys  
Paul & Julie Fuehne  
Sue & Ron Fuehne  
Janice Gilmor  
Joseph & Carol Hemker  
Linda Klostermann  
Norbert & Jane Klostermann  
James & Mary Lampe  
Deb Litteken  
Jim & Carol Loepker  
Phillip & Carol Menkhaus  
Ann & Bill Milliken  
Cindy, Roger, Brian, Julie, & Christi Niemeyer  
Rita Nordhaus

Maggie Peters  
Dan & Judy Pollmann  
St. Joseph Hospital  
Joan Theising  
Wayne & Angela Toennies  
Steve Verdeyen  
Greg & Jan Wilburn  
Paula (Winkeler) Williams  
Andrew Winkeler  
Bernard & Rita Winkeler  
Daniel & Sue Winkeler  
The Family of Karen Budde

**Van Causey** from Malone Family

**Paul Duncan** from Marilyn Duncan

**Bernice Freund** from Kristine Siegler  
Diane Von Bokel

**Bob Hemker** from Kristine Siegler

**Dorothy M. Humphrey** from Anonymous  
Joyce Becker  
Charlie & Synthea Fischer  
Brian & Karen Humphrey  
Rodney & Emily Ibendahl  
Tom & Ruth Kueper  
Kurt & Lynn Ripperda  
Dan & Jane Rosen  
Mark & Kelly Rosen  
James & Cathy Shew  
Jim & Louise Strieker  
Joan Theising  
David & Lena Woltering  
The Family of Dorothy M. Humphrey

**Lucas Frederick Johnson** from Kevin & Liz Zenk

**Joan Kemper** from Kathy Austin

**Tom & Brent Kohrmann** from Catholic War Veterans  
Marion Post #1780  
Betty L. Gross  
Kimberly Johnson  
Helen Kohrmann  
Kelly Kohrmann  
Phillip & Carol Menkhaus  
Michael & Elizabeth Parker  
Pharmacy Administration Consultants  
Mary Jane Schrage  
Amy Tiemeier  
William & Lynda Uhde  
Dewey & Paula Williams  
The Family of Tom & Brent Kohrmann

**Lorraine Linnemann** from Steve & Marcella Kohnen  
Greg & Jan Wilburn

**Ken Loepker & Les Laux** from Sandy Harris

**Tom Marti** from Mr. & Mrs. Bill Basler  
Ken Becker  
Jeanette Benhoff  
Dan & Ruth Bickline  
Bill Bust  
Patricia Davenport  
Rich & Marcie Hacker  
Hansen Family Trust  
Donna Hollenkamp  
Jean Holtgrave  
IDPH Co-Workers of Karen Senger  
Albert & Doris Johnson  
Christopher & Susan Johnson  
John & Mary Kampwerth  
Laura Kapp

Elaine Klostermann  
Steve & Darlene  
Kochner  
Brad & Jean Korte  
Mike & Barb Kuhl  
Al & Eric Lengermann  
Joseph Lengermann  
Dorothy Marti  
Jerry & Irene Marti  
Roy & Leona Marti  
Rosemary Meyer  
Jerry Minchey  
Jon & GERALYN Minton  
& Family  
Ron & Leona Moss  
Paul & Joyce  
Musenbrock  
Mark & Joyce  
Niemann  
Sandra Plocher  
Eileen Reding  
Terry & Joan Riffel  
Shirley Sackett  
Jim & Lynn Schmidt  
& Kim  
Edward Schrage  
Ray & Romy Schrage  
Willa Senger  
Kristine Siegler  
Gerald & Bernette  
Sparlin  
Alan & Ann Stoecklin  
Paul Talleur  
Laurie & Gary Todt  
Family  
Wayne & Jean Trampe  
Mr. & Mrs. Larry  
Wellen  
Paula (Winkeler)  
Williams  
Andrew Winkeler  
Franklin & Barb  
Zaloga  
Butch & Pat Zobrist  
Ronald Zobrist  
The Family of  
Tom Marti

**Ken O'Dell** *from*  
Jon C. Evers

**Fred Olliges** *from*  
The Becker Family  
Foundation  
Michael & Marlene  
Fields  
Royce & Marlene  
Fletcher

Mark & Donna  
Johnson  
Mildred Johnson  
James & Mary Lampe  
Lavern & Bernice  
Langhauser  
Brian & Blanch  
Schwarz  
Tom & Deb Thole  
James & Mary Kay  
Wiegmann  
The Family of  
Fred Olliges

**Bert Rakers** *from*  
Jim & Eileen  
Boeckmann

**Joe Ripperda** *from*  
Steven & Doris  
Medhurst  
Frank T. Richter  
Theresa Richter

**Wilhelmine Schroeder**  
*from*  
Theresa Richter  
Beverly Ripperda

**Florence Seiffert** *from*  
Kristine Siegler

**Margaret C. Thole**  
*from*  
Anonymous  
Aviston Lumber Co.  
Donald & Melinda  
Hustedde  
Janet Kampwerth  
Deb & Ken Keilbach  
Richard & Debra  
Knebel  
Leo & Barb Lammers  
Donald & Marian  
Perez  
Dennis & Patricia  
Potthast  
James & Kathleen  
Rensing  
Theresa Richter  
Tom & Jane Sheridan  
Leo & Marsella Varel  
Bernell & Yvonne  
Warnecke  
Dominic & Janice  
Wessel  
Wiegman Ford

Roger & Mary Lou  
Wolfe  
Sherry & Paul Wuller  
The Family of  
Margaret C. Thole

## TRIBUTES TO...

**Bob Brandkamp** *from*  
Kathy Austin

**Terry Gerstner** *from*  
Marvin & Jane  
Hollenkamp

**Ralph & Ruth**  
**Langhauser 50th**  
**Wedding**  
**Anniversary** *from*  
David & Lucille  
Cooper  
Tom & Jan Hustedde  
Joe & Sylvia  
Langhauser  
Lavern & Bernice  
Langhauser  
Ralph & Ruth Ann  
Langhauser

## FAMILY FOUNDATION & INDIVIDUAL GIFTS

**A**  
Anonymous  
Anonymous Macy's  
Employees  
Anonymous AT&T  
Employees  
Anonymous CFC  
Donors  
Raymond & Melodie  
Ainslie  
Bob & Sue Albers  
Brad & Phyllis Albers  
Chuck & Diane Albers  
Clint & Chrissie  
Albers  
Dennis & Sandy  
Albers  
Donald & Claudia  
Albers



*Terry Dodson, CL program participant at the Fairview Heights Metro location, received the Hurray for Hannah Award at the Special Olympics Track & Field competition in April 2013.*



*Sparky came for a visit during a little down time at the Breese East location. Joan had a nice break from working to spend a little time petting Sparky. Sparky is owned by Geri Detmer, a CL Direct Service Provider.*



*FUSION participants along with 2 CILA homes spent the day baking and hosted a bake sale to donate the proceeds to the Clinton County Humane Society (CCHS). Pictured l to r: CL program participants Brandy Gallagher, Sandy Plocher, Diane Hemker, and Jennifer Eide present a check to CCHS volunteers Stacy and Laura.*



*Alex Morrison performs his song he co-wrote at the Community Link St. Patrick's Day Gala on March 17th, 2013. Alex was one of the three performances from program participants. Ron Bequette wrote a speech about how Community Link's programs created an environment that he would not have received elsewhere. Kathy Wempe performed "Tongue Twister" on the piano.*



*First National Bank of Carlyle sponsored a client team at the 17th Annual Breeze Golf Scramble on Saturday, June 22nd, 2013 at Bent Oak Golf Course, allowing them to take part in this fun day. Pictured l to r: Brenda Shelton, Brian Tucker (Program Manager), Erik Schwalenberg, and Charlie Drees.*



*Team Tom Marti started the 7th Annual Buddy Walk on Saturday, April 27th, 2013 in loving memory of Tom Marti.*

Jerry & Marian Albers  
Mick & GERALYN Albers  
Pat Albers  
William Anderson  
Jason & Katie Anselment  
Tony & Deb Antonacci  
Ronald & Leigh Ann  
Arentsen  
Bob Astroth  
Ann Austin

**B**  
Deacon Rich & Pat  
Bagby  
Shawn Balint  
Nicole Baquet  
Vincent & Connie  
Barciszewski  
Gerald & Dorothy  
Bauman  
Dale & Carol  
Baumgartner  
Brad & Krescene Beck  
Jeffrey & Aggie Becker  
Don & Beth Bedard  
Michael & Michelle Beer  
Nikki Beer  
Jeanette Benhoff  
Gene & Sharon Bickl  
Dan & Darlene Billhartz  
Francis & Helen  
Billhartz  
Mark & Lynn Billhartz  
Bill G. Bodine  
Brian & Julie Boeckman  
Dot & Roger Boeckman  
Jim & Eileen Boeckmann  
David & Amy Boggs  
Greg & Nikki Bollmann  
Bob Brandkamp  
Paula Brandkamp  
Stan Brandmeyer,  
Attorney-at-Law  
Dan & Mardel Braun  
Jerry & Joyce Brefeld  
Jean Brenner's Family  
Anthony & Donna  
Budde  
Harry & Cathie Buller  
Jim & Mary Burns

**C**  
Patrick Calvert, Sr.  
Richard & Dorcas Cecil  
John Cederlund  
Teresa Chasteen  
Lori Chesna

Jim & Arlene Clark  
Anita Cook  
Carl & Stephanie Cook  
Greg & Norma Cook  
Veda & Donald Cooling  
Richard & Carolyn  
Crocker  
Caroline Cvetkovic

**D**  
Richard & Carolyn  
Davenport  
Larry & Linda Davis  
Nancy Day & David  
Dalhaus  
David & Jane Deiters  
Philip & Joyce Detmer  
Tom & Maribeth Detmer  
Anna Belle Dixon  
Alvina Donnewald  
Elaine Duensing  
Anna Duing  
Agnes Dumstorff  
Debra Dumstorff

**E**  
Jim & Mary Edds  
Carolyn Enboden  
Mike & Brenda Endres  
Paula Essenpreis  
Skip & Shirley Etter  
Terry & Mary Eversgerd

**F**  
Lynda Fahrner  
Elaine Fehrmann &  
Dennis Winkeler  
Norb Feltrop  
Adam & Jamie Fields  
Gwen Fischer  
Tom & Shirley Fisher  
Royce & Marlene  
Fletcher  
James & Theresa Flood  
Donald & Susie Foppe  
Edward & Joan Foppe  
Emily Foppe  
Loretta Foppe  
Roger & Margaret Foppe  
Wendy Frasier  
Carol Fritch  
Bob Fruend  
Sue & Ron Fuehne  
Portia Fullgrabe

**G**  
Lori Garcia

Randy Gehrs  
Curt Gentry  
Harold & Christina  
Gentz  
Bob & Lisa Gerner  
Jacqueline Gerstner  
Rick & Barb Gerstner  
& Family  
Ruth Gerstner & Family  
Stanley & Ruth Gezella  
Daniel & Dixie Glaub  
Bob & Agnes Glaub  
Pauline Glenn  
Dr. Penny Gozia  
Dave & Diane  
Grappenhause  
Mary Grappenhause  
Debra Gray  
Betty L. Gross  
Paul & Margo Gunsser

**H**  
Rob Haag  
Bryan & Teresa Haake  
Rich & Marcie Hacker  
Jeff & Jennifer Haidu  
Theresa Hanson  
Joann (Pete) Harper  
Gerald T. Harris  
Terry & Mary Harris  
Rosemary Hatton  
Bernard & Marilyn  
Heimann  
Jim & Kathie Heimann  
Joe & Nancy Heimann  
Johanna Heimann  
Joseph Heinzmann  
Frank & Madelyn  
Hellige  
Glenn & Gail Hemker  
Jim & Judy Hemker  
Joe & Carol Hemker  
Mary Jo Hendricks  
Art & Sylvia Henken  
Dennis & Barbara  
Henken  
Norm Herzing  
Paul Herzing  
Scott & Sheri Herzing  
Charles & Carla Hilmes  
Larry & Marla Hilmes  
Jan Hincapie  
Bob & Kathy Hitpas  
Dan Hitpas  
Mark & Becky Hitpas  
Patrick & Carol Hitpas  
Francis & Florence Hogg

Marvin & Jane  
Hollenkamp  
Nick & Beth  
Hollenkamp  
Savannah Holmer  
Jean Holtgrave  
Cindy Holtgrewe  
Marsha D. Holzhauser,  
Attorney-at-Law  
Jessica Hopkins  
Don & Sandy Hostmeyer  
Alan Howard  
Jeannette Huber  
Steve & Ellen Huegen  
Carl & Geri Huels  
John & Diane  
Huelskamp, Sr.  
John & Kim Huelskamp  
Mark & Karen  
Huelskamp  
Bernard & Irene  
Huelsmann  
Karen Huelsmann  
Mike & Lynne  
Huelsmann  
Alicia Hustedde  
Tom & Jan Hustedde

**I**  
Douglas & Julie Isaak

**J**  
Robert & Janet Jacob  
Carl & Margaret Jakel  
Dale Jakel  
Alfred Jansen  
Barb Jansen  
Chad & Jennifer Jansen  
Jerry & Martha Jansen  
Lawrence & Rose Jansen  
Theresa Jansen  
Virgil & Diane Jansen  
Linda Johnson  
Mark & Donna Johnson  
Steve & Linda Johnson  
Gary & Denise Johnston

**K**  
Stanley J. Kalmer  
John & Mary Kampwerth  
Paula & Scott  
Kampwerth  
Vera Kanak  
Thomas & Celia Kannall  
James Kaulig  
Jeff & Renee Kehr  
Deb & Ken Keilbach

John & Fern Kelly  
Sherri Khile  
Tammy Kirksey  
Deborah Kleiboeker  
Jerri-Lynn Kleina  
Del & Gerry Kloeckner  
Gary Kloeckner  
Roman W. Kloeckner  
Norb & Jane  
Klostermann  
Ruth Koblenz  
Matthew Koch  
Sonny Koch  
Melissa Kohnen  
Randy & Bonnie  
Kohrmann  
Ryan & Shelly  
Kohrmann  
Craig & Dana Korte  
Jerry & Judy Korte  
Linette Korte  
Ralph & Donna Korte  
Thomas & Marian Korte  
John & Barb Krebs  
Jim & Tammy Kreke  
Don & Norma Krohn  
Norman Kropp  
Wilfred & Edna Kueper  
Wayne & Amy Kruse  
James & Colleen Kuhl

**L**  
Michael Labelle  
Michelle Lafollette  
Rachel Laier  
Roger & Florence  
Lakenburgs  
Ken & Margie Lammers  
Adelpha Lampe  
Jason & Reagan Lampe  
Thomas Lampe  
Kevin Landmann  
Joe & Sylvia Langhauser  
Burnell & Sue Laux  
John & Carol Lengerman  
Angie Leonetti  
Marc Levi  
Angela Lewis  
Andrea Linders  
Cindy Litteken  
Dennis & Rita Litteken  
Michael & Diana Loehr  
Severin Loepker  
Peter F. Longshaw  
Claudia Lowry  
Keith & Andrea Lueking

**M**  
Linda Majchrzak  
Linda Marti  
Roy & Leona Marti  
Donald & Julia Maue  
Jerry & Marylin  
McDevitt  
Joseph & Barb  
McNamara  
Michael & Monica  
Mensing  
Tim Mensing  
Ken & Susan Meyer  
Mary Ann Meyer  
Joe & Anne Michalski  
Louise Miller  
Edwin Mills  
Marylyn Minard  
Jon & Geralyn Minton  
Judy Mueller  
Robert Mueller  
Bertha Murphy  
Joseph & Deb Murphy  
Marie Murphy  
Peter & Deb Murphy  
Paul & Joyce Musenbrock

**N**  
James & Terri Neighbors  
Harry & Darleen Nelson  
Rick & Barbara Nelson  
Robert & Melissa  
Netemeyer  
Steven & Michelle  
Netemeyer  
Mike & Donna  
Nettemeier  
Tanya Neuf  
Cindy & Rob Neumann  
Angi Niemeyer  
Cindy Niemeyer  
Elsie Niemeyer  
Greg & Marie Niemeyer  
John & Janice Niemeyer  
Pat & Esther  
Norrenberns

**O**  
Bobby & Carolyn Odum  
Don & Kay Ostrom  
Norb & Dee Ottensmeier  
Sandra Owens

**P**  
Brian & Maureen Papa  
James Patterson  
Tim & Leslie Pedtke



*During lunch periods on Valentine's Day, program participants and their special friends were treated to a quiet lunch away from their normal lunch area. In recognition of the special day, the couples also had their pictures taken.*



*First Step, a division of Community Link, promotes parent involvement through Family Play Groups such as this one at the Breese City Pool, as well as Policy Council, Parent Committees, community classes, and field trips.*



*Three individuals enrolled in the Community Living Program along with staff person Brenda Robertson enjoyed a St. Louis Cardinals baseball game on May 13th, 2013. These tickets were made possible by Blaine Rehabilitation Management.*



First Bank Breese employees volunteered at registration during the Community Link St. Patrick's Day Gala on March 17th, 2013. First Bank employees regularly volunteer at Community Link's other fundraisers as well, which include the Buddy Walk and the two Golf Scrambles. Pictured l to r: Geri Wobbe, Marilou Rakers, Joyce Timmermann, Amy Kampwerth.



The Clinton County Parrot Head Club, a non-profit organization whose purpose is to help charitable organizations and assist in community outreach programs, hosted their 6th Annual Spring Phling on February 23rd, 2013. Proceeds from the raffle ticket sales and auction benefited Community Link.



Clinton County Parrot Head Club members braved the cold weather to grill hot dogs for 7th Annual Buddy Walk on April 27th, 2013. Pictured l to r: Carl Wessling, Jim Taylor, Janelle Holtmann, Jennifer Wienker, Todd Peppenhorst (CCPHC President), Kris Kauling, and Natasha Kauling.

Randy & Kim Peek  
Betty Pendleton  
Park & Nancy Penwell  
Herb & Jodi  
Pingsterhaus  
Mike & Barb Plocher  
Ben & Melissa Poletti  
Kelly & Dennis  
Pollmann  
Terry & Wilma Postin  
Ken Powless  
Bruce Prediger  
Craig Prediger  
James & Catherine  
Prediger  
Clarence Price

**R**  
Tom & Nancy Rakers  
Gerry Ramey  
Family of Lynn Randall  
Robert & Pat Range  
Rick & Rita Ratermann  
Rodney & Katie  
Ratermann  
Don Reeves  
William & Dee Reeves  
Francis & Rose Marie  
Rehkemper  
Gerald & Paula  
Rehkemper  
Dan & Nancy Renschen  
Roger & Judy Richards  
Joanie Richter  
John & Bernadine  
Richter  
Kurt & Lynn Ripperda  
Ron & Mary Ripperda  
Jan & David Rittenhouse  
Chris & Lisa Rivera  
Renato Rivera  
Betty Robben  
Kent & Connie Robben  
Wilma Robinson  
Gene & Martha Robke  
Glenn & Elaine Robke  
Katharine Rogers  
Ed & Donna  
Rolfingsmeyer  
Myrt & Pat Rollins  
Dan & Jane Rosen

**S**  
Shannon Sartain  
Kurt Schenk  
Timothy & Lorian  
Schleper

Tina Schleper  
Donald & Joyce Schmidt  
Jim & Lynn Schmidt  
Kristin Schmidt  
Jack & Evelyn Schmitt  
Donald & Judy Schniers  
Allan & Marilyn  
Schorfheide  
Dorothy Schrage  
Edward Schrage  
Judy Schrage  
Ray & Romy Schrage  
Jim & Dianne Schroeder  
Kevin & Karen  
Schroeder  
Mike & Linda Schuette  
Martin Schumacher  
Mary Jo Schwarz  
Ron & Mary Scifres  
Mary Sereno  
Virginia Sexton  
Jeanie Sheathelm  
Dennis & Audrey Siegler  
Kristine R. Siegler  
Amanda K. Smith  
Clinton M. Smith D.C.,  
P.C.  
John & Linda Smith  
Larry Smothers  
Dale Snyder  
Lawrence & Jeanine  
Spirek, Sr.  
David & Diane Spradling  
Mary Stephens  
Mark Stewart  
Dale Strubhart  
Melissa Swagler  
George & Patricia  
Swengross

**T**  
William & Doris Tadlock  
Jim & Fran Taylor  
Dave & Connie Tebbe  
Emily Tebbe  
Cecil & Bonnie Thacker  
Joan Theising  
Elsie Thole  
Renee K. Thole  
Kenneth & Diane Thole  
Ralph Thole  
Charles Timmermann  
Cindy Timmermann-  
Deiters  
Madelyn Timmermann  
Maurice Timmermann  
Nick Timmermann

Patrick & Linda  
Timmermann  
Rob Timmermann  
Timothy Timmermann  
William J. Timmermann  
Dave & Shelley Toennies  
Dennis & Pat Toennies  
Denise Trame – Clinton  
County Treasurer  
Wayne & Jean Trampe  
Susan Triphahn  
Cecelia Tschannen

**U**  
Andrew Usselmann  
Steve & Mary Usselmann

**V**  
Christine Van Sickle  
Gary & Mary Vandelloo  
Virgil & Betty VanDover  
Stan & Mary Varel  
Joe & Patricia Vastine  
Marvin & Janet Venhaus  
Jean Vogt  
Betty Von Bokel  
Brenda Von Hatten  
Denise Vonder Haar  
Brad & Jill Voss  
Cyril & Eleanor Voss  
James & Donna Voss  
Jerry & Pat Voss  
Marian Voss  
Nicholas & Angela Voss

**W**  
Sue, Al & Jen Walter  
Terry & Ray Watsek  
Dorothy Weber  
Mr. & Mrs. Louis G.  
Weisenfeld  
Duane Welsch  
Janice Welsch  
Bernard Wempe  
Shirley Wessel  
Brian & Kristen Wheeler  
Rodd & Lisa Whelpley  
Dennis & Genie White  
Maria Jesusa Wiegman  
Connie & Ron  
Wiegmann  
Carol Wieter  
Junilla Wieter  
Hugo Wilke  
Paula Williams  
John Wilson  
Andy Winkeler

Gary & Diane Winkeler  
 Stacy & Ann Winkeler  
 Wayne & Janice  
 Winkeler  
 Brian & Amy Wuebbels

## Z

Angie Zahn  
 Frank & Barb Zaloga  
 Dorothy Zinn  
 Lorraine Zurliene

## INDIVIDUAL GIFTS – CURBSIDE RECYCLING

Anonymous  
 Bob Brandkamp  
 Charles & Carla Hilmes  
 Kevin & Tiffany  
 Hollenkamp  
 Carl & Margaret Jakel  
 Cindy Neumann  
 Gary & Diane Winkeler

## IN-KIND GIFTS OF GOODS

*(excluding Golf Scramble  
 sponsors, recognized in ad)*

### from Businesses

4imprint  
 54th Street Bar & Grill  
 All Around Tree Care  
 Barnes & Noble  
 Book Store  
 Belleville News  
 Democrat  
 Bent Oak Golf Course  
 Blaine Rehabilitation  
 Management, Inc.  
 Breese Dental Care  
 Breese Family Vision  
 Carlyle IGA  
 Casino Queen  
 Centru Bank  
 Dairy King  
 Dynamic Vending  
 Excel Bottling Co.  
 Germantown Seamless  
 Gutters  
 Gil Klein's Brand Source  
 TV & Appliances  
 GRS Construction, Inc.  
 Hardees of Breese  
 K & J Chevrolet, Inc.

Looking Glass Playhouse  
 Lynfred Winery  
 Mid-County  
 Auto Supply  
 Mioux Florist &  
 Greenhouse  
 Missouri Botanical  
 Garden  
 NASCAR SpeedPark  
 Nelson Heating &  
 Cooling  
 Nine Seventy Furniture  
 & Flooring  
 Oak Brook Golf Club  
 Parisi Speed School  
 Raging Rivers  
 Ralcorp Holdings, Inc.  
 Rehkemper & Son, Inc.  
 Rickhoff & Associates,  
 LTD  
 Schuette's Markets  
 Signature Hardscapes,  
 Dustin Nelson  
 Silver Dollar City  
 Six Flags Friends  
 South Central Transit  
 of Illinois  
 Southern Bus & Mobility  
 Southern OB/GYN  
 Associates  
 St. Louis Cardinals  
 St. Louis Rams  
 Stone Hill Winery  
 Taylor Made Signs  
 TechKnow Solutions, Inc.  
 The Ease Program  
 The Magic House  
 Ticketmaster  
 Twin Oaks Golf Club  
 Wal-Mart - Highland  
 Yorktown Golf Course

### from Organizations/ Gov't.

Carlyle Christian Church  
 Central High School  
 Students  
 City of Breese - Pool  
 Eldon Hazlet  
 Swimming Pool  
 St. Anthony Parishioners,  
 Beckemeyer  
 St. Bernard Parishioners,  
 Albers  
 St. Joseph Hospital  
 St. Joseph Hospital RNs  
 St. Mary's Radiology  
 Department

St. Paul Parish –  
 Fr. Chuck,  
 Judy Hesson,  
 Connie Knebel,  
 Cafeteria Workers,  
 Marion Korte  
 Trenton Tumbleweeds  
 Garden Club  
 United Methodist  
 Women's Group  
 West Gate Baptist  
 Church Quilting  
 Ladies

### from Individuals

Anonymous  
 Janice Aarns  
 Jerry & Marian Albers  
 Amanda Arnold  
 Jeanette Benhoff  
 Jim & Eileen Boeckmann  
 Bob Brandkamp  
 Mel & Janet Deien  
 Geri Detmer  
 Renae Donohoo  
 Carolyn & Chris  
 Enboden  
 Adam & Jamie Fields  
 Paul & Julie Fuehne  
 Dave Gall  
 Rich & Marcie Hacker  
 Beth Hake  
 Terry & Mary Harris  
 Ed & Gerrie Haukap  
 Johanna Heimann  
 Madonna Heldenbrand  
 Dennis & Barbara  
 Henken  
 Eric & Jamie Henken  
 Ron & Helen Henken  
 & Family  
 Norm Herzing  
 Carla Hilmes  
 Kelly Hollenkamp  
 Marvin & Jane  
 Hollenkamp  
 Jean Holtgrave  
 Melissa Howard  
 Tillie Hurley  
 Leigh Janes  
 Kendra Jansen  
 Jeff Krebs  
 Larry Kruse  
 Jeanne Kueper-Krueger  
 Mark & Laurie Kuhn  
 & Family  
 Ralph & Ruth Ann  
 Langhauser



*Community Link in Breese hosted four Mater Dei Catholic High School seniors as part of their senior service learning requirements for 3 weeks in January 2013. Seated are: Jade Beckmann and Mary Jo Hollenkamp; standing are: Rebecca Spears and Trevor Koerkenmeier.*



*Community Link in Fairview Heights hosted two students from Althoff Catholic High School as part of their senior service learning requirements for 3 weeks in January 2013. Pictured l to r: Michele McDaniel, Associate Director at Fairview Heights Metro, Miranda Wade, and Angela Vitt.*



*Alyssa Frerker, 2011 Miss Madison County, 2013 Miss Heart of Missouri, and a finalist in the Miss Missouri contest volunteered in May 2013 to help plant flowers. Alyssa is helping Marcia Taylor with the flower box.*

# Remembering Our Friends...

## **Mark Phillips**

56, of Trenton, IL, passed away on October 28, 2012. Mark participated in the Adult Day Training program at the Breese West site. He was a resident of Oakview Home in Trenton, IL.

## **Alfred Edwards**

82, of Swansea, IL, passed away on November 9, 2012. Alfred participated in the Adult Day Training program at the Fairview Heights Metro site. He was a resident of Specialized Living Center in Swansea, IL.

## **Jeffrey Scott Pinkerton**

44, of Swansea, IL, passed away on January 20, 2013. Jeffrey participated in the Adult Day Training program at the Fairview Heights Metro site. He was a resident of Specialized Living Center in Swansea, IL.

## **Anthony "Tony" Korando**

58, of New Baden, IL, passed away on February 28, 2013. Tony participated in the Adult Day Training program at the Breese West site. He was a resident of Clinton Manor Living Center in New Baden, IL.

## **Bernice A. Freund**

82, of Aviston, IL, passed away on May 16, 2013. Bernice participated in the Community Living Specialized Services program in Breese. She was a resident of Countryside Manor in Aviston, IL.

## **Zachary Gene Guppy**

25, of Belleville, IL, passed away on June 11, 2013. Zachary participated in the Adult Day Training program at the Breese East site. He was a resident of Royal Living Center in Belleville, IL.

Jamie Litteken  
Cindy Lockhart  
Senator Kyle McCarter  
Ken & Susan Meyer  
Rick & Barbara Nelson  
Sandra Owens  
Randy & Kim Peek  
Betty Pendleton  
Pam Peters-Huffines  
Ben & Melissa Poletti  
John & Maria Price  
Terry & Joan Riffel  
Deborah Rigdon  
Ed & Donna

Rolfingsmeyer  
Jan Schneider  
Steve & Deb Schomaker  
Edward Schrage  
Ray & Romy Schrage  
Kathy Shaw  
Kristine Siegler  
Ginnie Smith  
Dave & Connie Tebbe  
Pete & Jackie Toennies  
Torres/Fite Family  
Wayne & Jean Trampe  
Brad & Becca Varel  
Pat Voss  
Genie White  
Diann White  
Jennifer Wienker  
Carol Wieter  
Greg & Jan Wilburn  
Renee Wilke  
Steve & Karen Woolf  
Dan & Elizabeth  
Wunder  
K.G. & Ann Yaunches  
Franklin & Barb Zaloga  
Laverne & Ethel  
Zurliene

## IN-KIND GIFTS OF VOLUNTEER SERVICE

### *from Businesses*

First Bank - Breese

### *from Organizations*

Althoff Catholic  
High School Senior  
Service Students  
CC Parrot Head Club  
Delta Theta Tau Sorority

Mater Dei Catholic  
High School Senior  
Service Students  
Mater Dei Catholic  
High School Track  
Team  
McKendree University  
Track & Field

### *from Individuals*

Janice Aarns  
Jaclyn Albers  
Mike Bango  
Emma Basler  
Alyssa Bassler  
Jade Beckmann  
Ron Bequette  
Jim Boeckmann  
Katrina Boogerd  
Marilyn Calvert  
Melissa Chwascinski  
Stephanie Cook  
John Feldman  
Adam & Jamie Fields  
Nichole Fields  
Rick Fitzgerald  
Lorie Frein  
Alyssa Frerker  
Rosie Frisch  
Chris Gebke  
Cindy Grefe  
Deb Guest  
Rich & Marcie Hacker  
Beth Hake  
Diana Hamilton  
Stacy Hart  
Bernard & Marilyn  
Heimann  
Cheryl & Jennifer  
Heimann  
Cateri Hellige  
Jeremy & Laurie  
Hemker  
Mark Hemker  
Nikki Hemker  
Dennis Henken  
Carla Hilmes  
Tara Hilmes  
Marla Hilmes  
Mary Jo Hollenkamp  
Nick Hollenkamp  
Karen & Emma  
Huelskamp  
Kourtney Huelskamp  
Johnna Huggins  
Cameron Husey  
Alicia Hustedde

Karis Johnson  
Kristi Johnson  
Amy Kampwerth  
Florence Kassen  
Kris & Natasha Kauling  
Heather Keene  
Deb & Cheryl Kehrer  
Kelly Klostermann  
Susan Knapp  
Trevor Koerkenmeier  
Matt Kohnen  
Glen & Geralyn Kruep  
Courtney Kuhl  
Ken Laux  
Jamie Litteken  
Kim Lohman  
Janice McElroy  
Monica, Melanie &  
Maggie Mensing  
Mary Miller  
Alex Morrison  
Bridget Nelson  
Barb Nelson  
Randy Peek  
Todd Peppenhorst  
Marilou Rakers  
Lisa Rehkemper  
Erick Requalt  
Eric Robke  
Rachel Ross  
James Rouse  
Mike Schrage  
Christy Sheldon  
Kristine Siegler  
Kyle Smith  
Rebecca Spears  
Kerry & Kathy  
Steinmann  
Jim & Fran Taylor  
Leroy Taylor  
Joyce Timmermann  
Aaron & Chris Toennies  
Jackie Toennies  
Mary Varel  
Tim Varel  
Angela Vitt  
Miranda Wade  
Kathy Wempe  
Carl Wessling  
Trent Weston  
Connie Wiegmann  
Janelle Wiegmann  
Jennifer Wienker  
Geri Wobbe  
Angela Zurliene

## First Step hit with Federal budget cuts...



The First Step Early Learning and Family Support's Early Head Start Program is feeling the impact of the Sequestration of Federal Funds. All Head Start and Early Head Start programs around the country received

a budget cut of 5.27%. The total amount of federal funding for First Step EHS program has decreased from \$343,476 to \$325,375, a decrease of \$18,101 per year. This cut was effective May 1, 2013.

Numerous programs like these throughout the United States are closing down sites, laying off staff, and cutting the number of children and families served. First Step is cutting enrollment from 54 children and pregnant women served at one time to 49. This means a cut of approximately 20 children and pregnant women per year. We were also forced to cut one Parent Educator from full time to part time. Many families are being affected, and will not be able to receive the comprehensive services that EHS provides. ❖

## Community Link Social Media Sites



Visit and Like us on Facebook and see daily postings of exciting news from Community Link, [www.facebook.com/commlink1972](http://www.facebook.com/commlink1972)



Follow us on Twitter, [www.twitter.com/CommLinkInc](http://www.twitter.com/CommLinkInc)



Learn more about Community Link and the services we offer, view our news section, and donate online by going to [www.commlink.org](http://www.commlink.org)

## United Way supports nonprofit agencies like Community Link...

The annual United Way Campaign began on September 3rd, and runs through October 31st. The dollars raised during this campaign supports a system of over 170 nonprofit agencies in 16 counties in Illinois and Missouri. Each year, one in three local people are helped through United Way, helping to make our region a better place for all of us.

Community Link recognizes the importance of the funding that is invested in our community and the communities around us, and as an agency have set a goal to raise \$15,000 through support from employees. Illinois Division agencies received over \$3 million in 2013 from United Way, with Community Link receiving over \$230,000.

This support matters to so many in our region, helping to fund our programs and others in need in our area. Community Link is proud to be a United Way member agency! ❖



Helping people.



United Way  
of Greater St. Louis

# Volunteer

Share  
your  
time &  
talent ...

- Artistic individual who demonstrates a love for art such as mosaics, pottery, jewelry making, painting, chalks, etc.
- Storyteller
- Reading Buddy to help individuals learn to read, or just read to a group/individual
- Creative individual to teach others to quilt, stitch, make blankets, etc.
- Green thumb or not, to teach the love of gardening
- Help people with disabilities to participate in fun activities and volunteerism within the community.



*Courtney Kuhl, then a volunteer and now a Program Manager at the Breese Day Training West site, volunteered to teach Kathy Wempe, a program participant at both the Breese Day Training West site and the Breese East Production site, the piano. Kathy learned "Tongue Twister", which she performed at the Community Link St. Patrick's Day Gala on March 17th, 2013.*



*During National Volunteer Week, Community Link honored Stacy Hart (l) for her volunteer work at the Breese Day Training West site. Stacy visited every Monday to provide program participants with a makeover. She provided a spa-like atmosphere along with hair dressing, manicure, and a basic massage. Sissy Loudon (r), program participant, was a customer of Stacy's.*



*Community Link asked...and they came! Through a request on Facebook, these lovely ladies volunteered to wrap gifts for program participants. Pictured l to r: Brianna Keene, Marcie Hacker, and Diana Hamilton. Not pictured: Susan Knapp.*



*Janet Burgess, Community Link program participant at the Breese Day Training West site, has a tremendous love for owls. Knowing how much she loves owls, Josh Cliff, a former Habilitation Assistant, gave Janet a special gift, an owl hat. Josh's wife has a wonderful talent for making hats, and donated this cute owl hat to Janet.*

# Thank You, Donors

July 1, 2013 – August 31, 2013

## BUSINESS / ORGANIZATIONS

Crafts & Occasions  
Knights of Columbus  
• Aviston Council #11110  
• Carlyle Council #1382

Kathy Steinmann  
St. Paul Church – Judy Hesson,  
Joan Riffel, Connie Kloss  
& Mrs. Weise  
Raina Taylor  
William & Doris Tadlock

## INDIVIDUALS

Anonymous  
Patricia Boien  
Michael & Marilyn Buscher  
Robert & Lucille Lippert  
Marilyn Sammarco  
Dennis & Deb Tegenkamp  
David & Shelley Toennies

## IN MEMORY OF...

Elizabeth "Betty" Wilke *from*  
Felix Wilke Family

## United Way / AT&T Campaign

*from*  
Anonymous  
Ronald Arentsen  
Debra Dumstorff  
Rob Haag  
Jason Lampe  
James Kuhl  
Jeff Kehr  
Mark Hitpas

## United Way / Citigroup Campaign *from* Cindy Holtgrewe

## United Way / Macy's Campaign *from* Anonymous

## United Way / Target Campaign *from* Gwen Fischer

## United Way / Wells Fargo Campaign *from* Michael & Phyllis Carter Theresa Jansen Gary Kloeckner Ken Powless Jill Voss

## United Way of Greater Kansas City Campaign *from* Amy Kruse

## IN-KIND SUPPORTERS

Barefootin' Saloon  
Blaine Rehabilitation  
Management, Inc.  
Sheena Bowen  
Eileen Cummings  
Diana's Draperies  
Mary Dix  
Rena Donohoo  
Jeanette Evans  
Jamie Fields  
Dave Gall  
Girl Scouts of Southern Illinois  
Madonna Heldenbrand  
Carla & Cierra Hilmes  
Jean Holtgrave  
Kendra Jansen  
Courtney Kuhl  
Mark & Laurie Kuhn & Family  
Jamie Litteken  
Cindy Lockhart  
Steve & Margaret Loomis  
Michele McDaniel  
Dan & Susan Potthast  
Frances Ratermann  
Terry & Joan Riffel  
Brittany Robbins  
Eric Robke  
Courtney Schweickhardt



Thanks to the sponsors of our  
**1st Annual Metro Golf Scramble**  
Saturday, July 27, 2013

## GOLD SPONSORS



## SILVER SPONSORS

A&D Electrical Supply, Inc.  
Allsup, Inc.  
Archway Electrical Sales, Inc.  
Excel Bottling Co.

Operating Engineers Local 520  
Poettker Construction Co.  
Weilmuenster Law Group, P.C.  
Woolpert, Inc.

## BRONZE SPONSORS

Brent Bergheger Chrysler-Dodge  
Chesley Fence Company, Inc.  
Dairy King  
Dutch Hollow Janitorial Supplies  
Erdmann Law Office  
First County Bank  
Greensfelder, Hemker & Gale, P.C.  
Johanna Heimann

Highland Recycling & Shredding  
Holland General Contractors, Inc.  
Medex Pharmacy  
Miken Technologies, Inc.  
Professional Equities, Inc.  
Wilke Truck Service, Inc.  
Wilke Window & Door, Inc.

**Gifts In Kind & Other Donors:** 54th Street Bar & Grill, Acorns Golf Links, Applebee's Neighborhood Grill & Bar, Cambridge Dental Care, Chase Vending, Chevys Fresh Mex, Clinton Hill Golf Course, Courtney & Brad Schweickhardt, Dairy King, Dixon Golf, Dobbs Tire & Auto Center, Excel Bottling Co., Five Guys Burgers & Fries, Four Points by Sheraton, Gateway Grizzlies, Golden Corral, Golf Discount, Golf Galaxy, Golfsmith St. Louis, Grey Eagle Distributors, Hilton Garden Inn O'Fallon, Jeanette Evans & Dean Frerking, Jeff & Raina Taylor, Joe's Crab Shack, John & Carol Lengerman, Kevin & Michele McDaniel, LongHorn Steakhouse, McAlister's Deli, Menards, Michael & Carol Birk, Papa Vito's Pizza, Poettker Construction Co., Polster, Lieder, Woodruff & Lucchesi, LC, Quail Restoration Association of IL, Red Lobster, Scott Credit Union, Starbucks, Steamfitter's Local 439, Stonewolf Golf Club, Tamarack Country Club, Taylor Made Signs, The Egg and I

Thanks to all the golfers and team sponsors!

Community Link is a proud member of  
United Way of Greater St. Louis





*Alex flexing his independence and wheeling himself to Classroom 11.*

# A Day in the Life of Alex

*"Kindness is the language the blind can see and the deaf can hear."*

This is a motto used at Community Link's Developmental Training site located on the West side of Breese. One individual who embraces that motto is Alex S. Alex is 32 years old and has a diagnosis of Cerebral Palsy. Alex has the opportunity to come to Community

Link each day by riding a South Central Transit bus that has enough room for his electric wheelchair. A Community Link staff member greets him in the hallway and encourages his independence by letting him drive himself down the hall to his classroom, touching his hand in the direction he needs to go if he goes off course. During this time he stops to say hello to all of his friends, and they allow him as much time as he needs. He then reports to room 11 where Missy Gaskill and Brianne Wellen make his life much more manageable. At this time he needs to use the restroom, which is a simple task for most people, but Alex must be lying down. He is provided with as much privacy as he needs. He enjoys joking with the staff while they are tending to the other clients.

Alex is repositioned back to his wheelchair to go to lunch. He doesn't have enough strength in his arms to feed himself more than a couple of bites, so staff members assist him with his lunch. When he is finished eating he wheels over to another table to visit with his friends. After lunch he goes back to his classroom to work on his goals, some of which include money identification and identifying his name. He is then repositioned to his NASCAR themed bed and asks to watch his Dale Earnhardt DVDs, which were a gift

from the staff.

When he gets back in his wheelchair, staff assists him to drink a soda and then he does his communication goal, which is talking to a staff member of his choice for a minimum of 5 minutes. He also enjoys emailing his sister to keep in touch with her and to see pictures of his new nephew.

Community Link staff members understand Alex's unique wants and needs, and are able to help provide a life and experiences that he would not otherwise be able to enjoy. ❖



*Missy Gaskill, Habilitation Specialist, helps Alex re-adjust in his wheelchair.*



*One of Alex's goals is to identify letters of the alphabet. Missy places the letters on a clipboard and asks Alex to show her the "E".*